

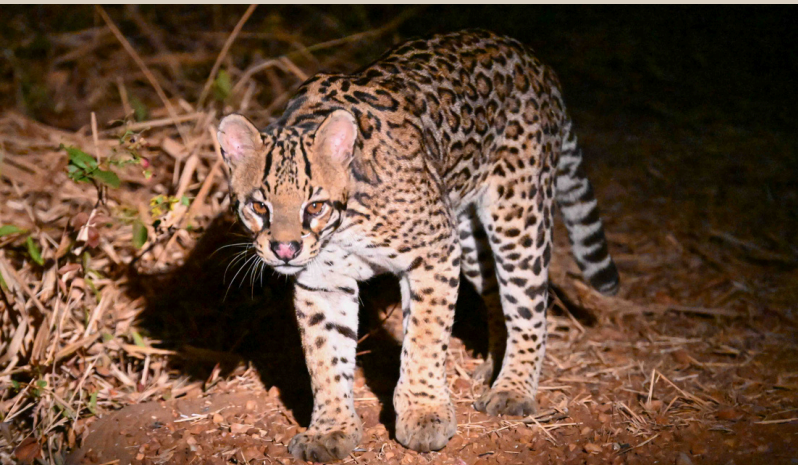
THE WILD SOURCE FOUNDATION



Our mission

The Wild Source Foundation is dedicated to creating lasting wildlife conservation through the empowerment of local communities.

We focus on **three** areas of need: wildlife research and conservation, creation of economic empowerment, and education. We leverage our partners and the connections we've built on the ground to identify needs directly from the communities where we operate.



Our origin

Since the inception of The Wild Source in 2008, we've been on a mission to conserve wildlife, using travel as our means to do it. Contributing to the regions where we operate has always been an essential part of our culture. We've supported wildlife research, job skills development, and creating ownership opportunities for local people within safari guiding operations and safari camps.

When the safari industry was brought to a halt in 2020, we faced massive challenges. It became evident that our ability to support our mission-based projects would be severely affected. We also knew the communities we worked with would be facing economic devastation and potential health risks.

Past travelers began reaching out to us with their concern for the wonderful people they had met on their safaris and asking how they could help. In response The Wild Source Foundation was formed.

Our impact

01 WILDLIFE RESEARCH +
CONSERVATION
\$94,333

02 ECONOMIC
EMPOWERMENT
\$53,135

03 EDUCATION +
JOB TRAINING
\$47,920





KENYA
\$57,000



TANZANIA
\$36,676



BOTSWANA
\$89,910



SOUTH AFRICA
\$10,202



BRAZIL
\$1,600

How you can help

PING'S BUSH SCHOOL

This Bush School Program launched by safari guide Ping, focuses on providing outdoor environmental learning opportunities for Kenyan youth.

The program went mobile in order to present to over 3,000 students at more than 50 schools. Continued support will help to develop an education center with overnight accommodation and multi-day programs.

PANGOLIN RESEARCH

We're sponsoring a South African Masters Degree candidate to track and follow pangolins, showing the vital role they play in revitalizing the soil in the Kalahari Desert.

Continued research will allow for conservation of these vulnerable animals.

OCELOT RESEARCH

Research is being conducted to look at how the ocelot is adapting to their ever-changing environment in Brazil's Pantanal.

We're learning how we can adjust our human altered landscapes for the preservation of certain species through this research.

GUDIGWA SHOP

A woman owned start up shop providing basic staples in the very rural village of Gudigwa, Botswana.

Your support helps supply food to the nearby primary school, while also creating a station for government rations delivered to the Elderly.



The journey ahead

We've seen Ping's dream of providing outdoor environmental education blossom. With more Kenyan educators wanting to provide the same opportunity for their students, demand has sky rocketed.

But conservation doesn't end with the environment. We have plans to build two traditional Maasai homes (bomas) so that students can learn more about the Maasai culture and how they have been among Africa's greatest conservationists for centuries.

We became the first tourism organization to financially support ocelot research in 2018, and in 2024, we've made this ongoing research our first out of Africa TWSF funded project.

Scan here to donate



mollytwf@gmail.com



www.thewildsource.com



801 14th St, Golden, CO 80401



+1 (720) 497-1250